



EMIRATES  
HILLS

# Year 12-13 Subject Options



Dream  
Inspire  
Achieve

2025-2026



Welcome to the DIA Year 12-13 Subject Options booklet. This is the beginning of our Year 11 Student Journey to decide their own personal next steppingstones. Here you will find information about the IB pathways we offer and the subject options available. Below is also an outline of how we will be supporting you and the students to make the right choices. However, nothing is set in stone and changes can be made throughout Year 11 and even in the first few weeks of Year 12!

**28th October - 29th November:**  
**One-to-one subject options interview support.**

Mr. Hitesh Bhagat (School Principal)-11A & 11B  
Ms. Michelle Puxty (Head of Secondary) - 11C & 11D  
Ms. Mona Khreis (DP Coordinator)- 11E & 11F  
Mr. Jonathon Dunn (Deputy Head) - 11G & 11H

...will be available for 15 minute online discussions regarding Year 11 subject options and Year 12 Pathways. Please ensure you click the correct person for your child's homeroom

**[Click here to make a booking](#)**

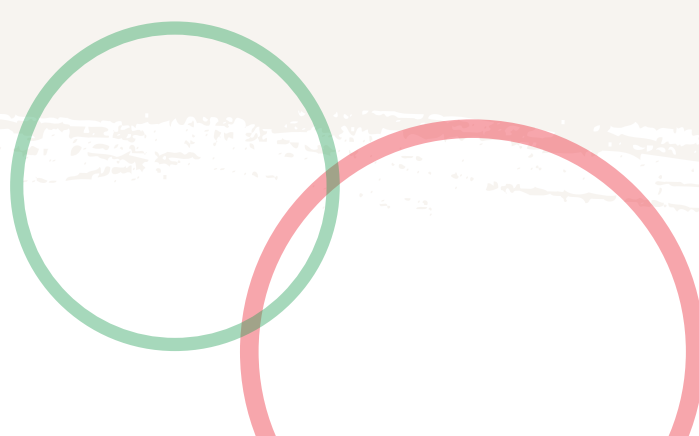
**22nd October:**  
**Options Evening (4:30pm - 7:30pm)**

Further information on the different pathways and choices available and an opportunity to discuss the different subject choices with the subject teachers.

**25th October:**  
**Careers Fair for Students**

Students will have the opportunity to discuss careers with industry experts and engage in bespoke career information sessions.

**[Link to the IB](#)**  
**[Subject Briefs](#)**





# Career-related Programme

Originating from an IB project that began in 2004 in Finland, the IB Career-related Certificate (IBCC) was extensively piloted around the world before being introduced into IB schools in 2012. Two years later, in November 2014, to align with the other three IB programmes, the IBCC was renamed the Career-related Programme (CP).

The IBCP framework allows students to specialise in, and focus on, a career-related pathway. The programme's three-part framework comprises the study of three Diploma Programme courses (Language A, Mathematics and a choice from Group 6) alongside career-related studies called BTEC and the distinctive IBCP core. At Dubai International academy, the career pathway is Business.

BTEC qualifications encompass applied learning that brings together knowledge and understanding with practical and technical skills. This applied learning is achieved through learners performing vocational tasks that encourage the development of appropriate vocational behaviours and transferable skills. We offer Level 3 BTEC Business.

## WHY CHOOSE THE IBCP?

The IBCP offers students a plethora of advantages through its personalised, interdisciplinary approach to learning. This focus on student-centric learning is embodied through the programme assessment, which is mostly in the form of project-based coursework and learning Business through a hands on approach. Again, this allows students to tailor their studies to issues and areas that they enjoy





# Diploma Programme

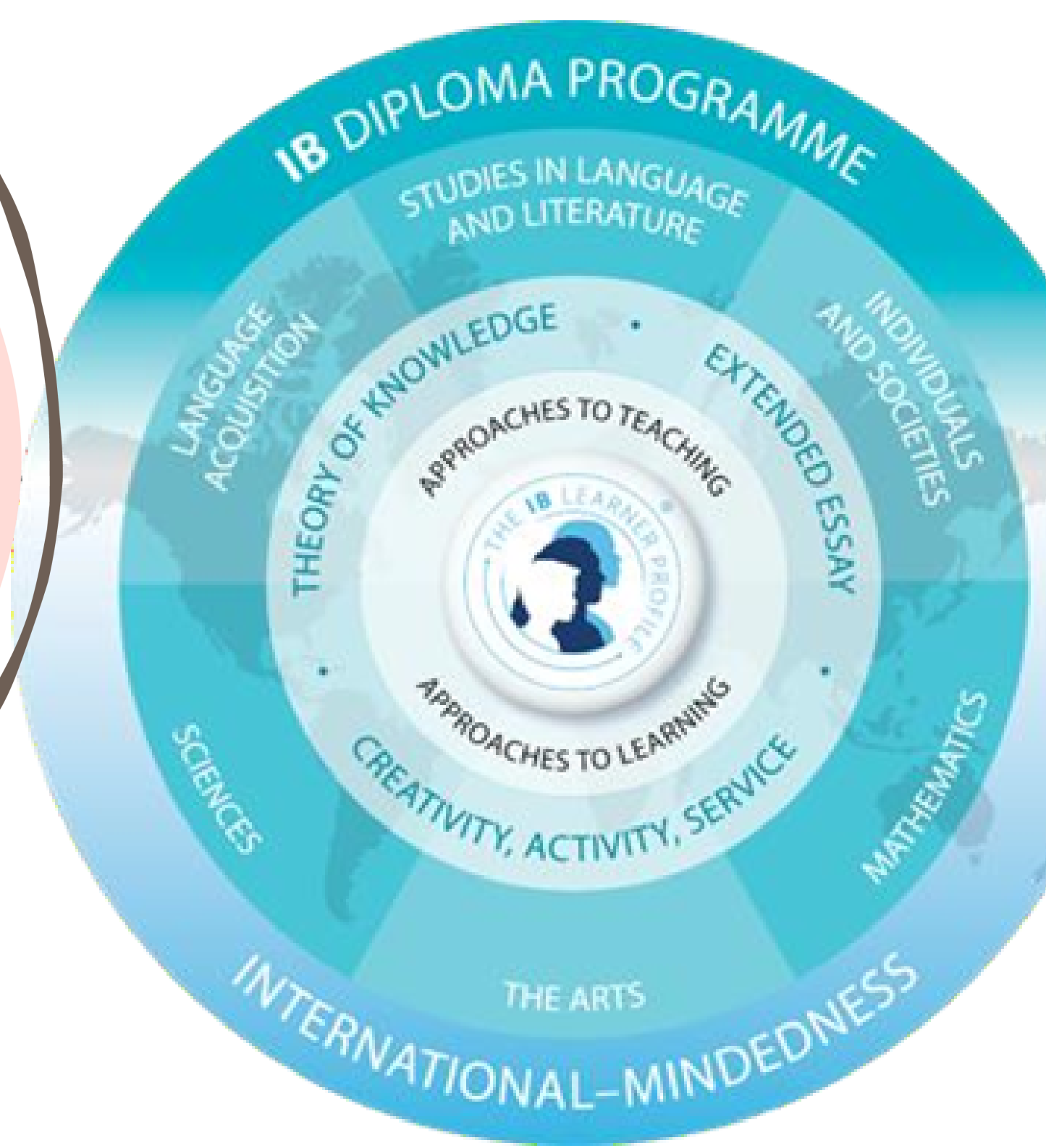
The IB Diploma Programme is a challenging two-year pre-university curriculum, primarily aimed at students aged 16 to 19. It leads to a qualification (the IB diploma) that is widely recognised as a premier programme by the top universities worldwide. Not only does it feature a rigorous academic framework, but it also encourages students to grow socially, physically and ethically.

Three subjects are studied at higher level (courses representing 240 teaching hours). Three subjects are studied at standard level (courses representing 150 teaching hours). All three parts of the core—extended essay, theory of knowledge and creativity, activity, service—are compulsory and are central to the philosophy of the Diploma Programme.

The Extended Essay is a 4,000 word in-depth study on a topic chosen by the student from one of the subjects they are studying. This provides an opportunity for the student to apply independent research skills and methodology. TOK encourages students to reflect on the nature of knowledge by critically examining different ways of knowing and different areas of knowledge

## WHY CHOOSE THE IBDP?

It is recognised and respected by the world's leading universities and IB students have a greater chance of earning a first-class honors degree with improved job prospects afterward. Students who have studied IB tend to do well at University as they arrive with strong study habits and well-established time management skills. Universities also value students with meaningful experiences beyond the classroom such as the Creativity, Action, Service (CAS) studied in the IB programme which encourages students to learn through hands-on experiences.



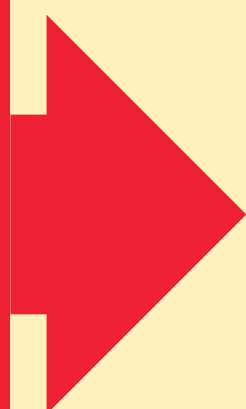


# OPTION BLOCKS

For IBCP, choose one from Block 1, 5 & 6, with at least 1 higher level (HL).

For IBDP, choose one from every block, 3 at higher level (HL) & 3 at Standard Level (SL)

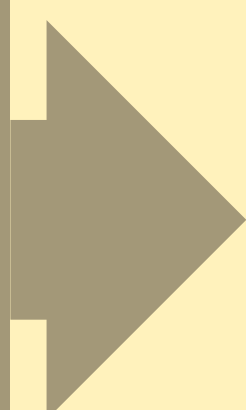
1



## Language A

English Language & Literature SL/HL  
English B HL, (This subject is taught in Group1)  
Self-Taught A SL

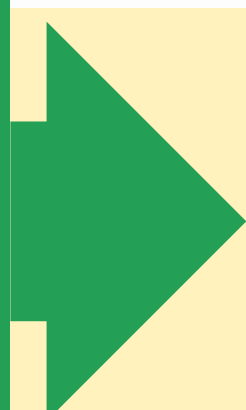
2



## Language B

Arabic B SL/HL, French SL/HL, Spanish SL/HL  
French Ab initio SL, Spanish Ab initio SL  
Self-Taught B SL/HL

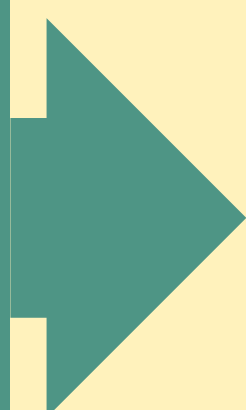
3



## Individuals & Societies

Business Management, Digital Society, Economics,  
Geography, Global Politics, History, Economics,  
Psychology, Physics\*  
All offered at SL and HL

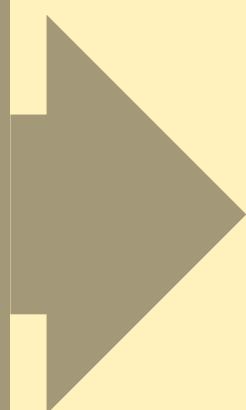
4



## Sciences

Biology, Chemistry, Physics, Computer Science  
Design Technology, Sports Science, Environmental  
Systems & Society  
All the above offered at SL and HL

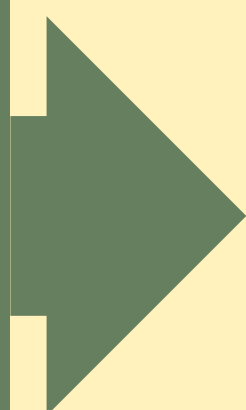
5



## Mathematics

Mathematics analysis & approaches (AA),  
Mathematics applications & interpretation (AI)  
Both courses offered at SL and HL

6



## Electives

Visual Arts, Film Studies, Music, Theatre, Biology, Chemistry,  
Physics, Computer Science, Design Technology, Business  
Management, Economics, Psychology, Digital Society,  
History, Sports Science, Environmental Systems & Society  
All the above offered at SL & HL.

\* Only for Three sciences option or doing ESS in Group 4 OR 6



# Popular Careers



## MEDICINE IBDP

- Chemistry HL
- Biology HL
- Math AASL (highly recommended)
- Physics HL.

Some institutions prefer/accept Math AI SL, some countries accept 3 sciences (Portugal, Netherlands, Germany, Sweden, Belgium, Norway, India)

## ENGINEERING COURSES IBDP

- Mathematics AA HL
- Physics HL
- Chemistry or Biology SL/HL

## ENVIRONMENTAL SCIENCES IBDP

- Mathematics AA SL,
- Biology HL/SL or Environmental Sciences HL/SL,

## PURE ECONOMICS IBDP

- Economics HL
- Mathematics AA HL (strongly recommended by Imperial, Cambridge, LSE)
- Mathematics AI HL is also accepted in some universities.

## BUSINESS MANAGEMENT – IBCP OR IBDP

- Business SL/HL or IBCP
- Mathematics AI HL is strongly recommended.
- Math AA SL is also acceptable.
- Mathematics AI SL is accepted only in UK/US in some schools.
- Canada does not accept Mathematics AI SL for any Commerce degrees

## ACCOUNTANCY IBCP OR IBDP

- Mathematics AA SL or AI HL/SL
- Business Management HL or or BTEC Level 3 Business (check under which Faculty for Canada)

## HISTORY/POLITICS IBDP

- History HL.
- Economics HL/SL
- Global Politics HL/SL

## LAW- POLITICAL SCIENCE IBCP OR IBDP

- English HL
- History HL
- Global Politics

## MEDIA/COMMUNICATION, JOURNALISM IBDP OR IBCP

- English HL





# Popular Careers



## VISUAL ART

IBCP OR IBDP

- Mathematics AI SL
- Visual Arts HL with a portfolio

## ARCHITECTURE

IBDP

- Physics HL or SL
- Math AA HL or SL
- Visual Arts HL

## GRAPHIC DESIGN/ANIMATION/ INTERIOR DESIGN

IBCP OR IBDP

- DT HL or Visual Arts HL
- Mathematics AI SL

## INDUSTRIAL DESIGN

IBDP

- Mathematics AA HL/SL
- Visual Arts HL
- Physics HL/SL

## SPORTS MANAGEMENT

IBCP OR IBDP

- Business Management HL or BTEC Level 3 Business
- Biology HL or Sports Science HL

## BUSINESS TECHNOLOGY

IBCP OR IBDP

- Business Management HL or BTEC Level 3 Business
- Computer Science HL

## KINESEOLOGY

IBCP OR IBDP

- Biology HL

## HOTEL MANAGEMENT & HOSPITALITY

- Business Management HL or BTEC Level 3 Business

## FINANCIAL TECHNOLOGY

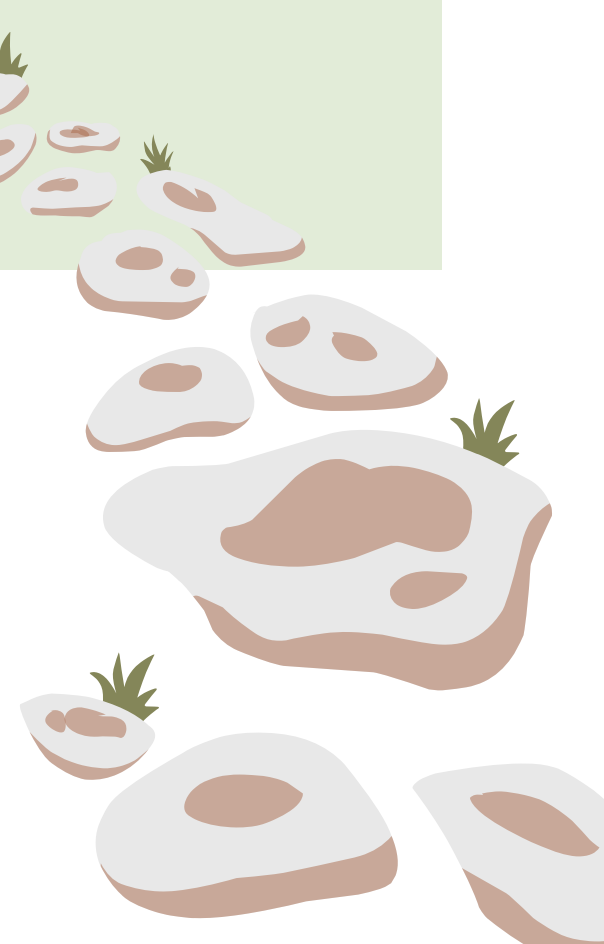
IBCP OR IBDP

- Business Management HL or BTEC Level 3 Business
- Computer Science HL

## ACCA ACCOUNTING & BUSINESS

IBCP OR IBDP

- Business Management HL or BTEC Level 3 Business



# DP Subject Entry - Grade Requirements 2025-26

SUBJECT	HL Entry Requirement MYP Grade or equivalent	SL Entry Requirement MYP Grade or equivalent
ENGLISH A LANG/LIT	5 in MYP English	4 in MYP English
SELF TAUGHT A and B	Please state your language Interview with the Self- Taught Coordinator Ms. Krishna Priya /Mona Khreis	Please state your language Interview with the Self- Taught Coordinator Ms. Krishna Priya /Mona Khreis
HISTORY	5 in MYP History or 6 in MYP English	4 in MYP History or 4 in MYP English
GLOBAL POLITICS	6 in MYP English or 5 in any of the MYP I&S Subjects	5 in MYP English or 4 in any MYP I&S Subjects
ECONOMICS	6 in MYP Economics or 7 in MYP Business	5 in MYP Economics or 6 in MYP Business
GEOGRAPHY	5 in MYP Geography	4 in MYP Geography
DIGITAL SOCIETY	5 in MYP Digital Design and 5 in MYP English	4 in MYP Digital Design and 4 in MYP English
PSYCHOLOGY	6 in MYP English	5 in MYP English
BUSINESS MANAGEMENT	5 in MYP Business or 5 in MYP Economics	4 in MYP Business or 4 in MYP Economics
PHYSICS	6 in MYP Physics	5 in MYP Physics
BIOLOGY	5 in MYP Biology	5 in MYP Biology



# DP Subject Entry - Grade Requirements 2025-26

SUBJECT	HL Entry Requirement MYP Grade or equivalent	SL Entry Requirement MYP Grade or equivalent
<b>CHEMISTRY</b>	<b>6 in MYP Chemistry</b>	<b>5 in MYP Chemistry</b>
<b>COMPUTER SCIENCE</b>	<b>6 in MYP Digital Design and 5 in Extended or Standard Mathematics</b>	<b>5 in MYP Digital Design and 4 in Extended or 5 in Standard Mathematics</b>
<b>DESIGN TECHNOLOGY</b>	<b>5 in MYP Product Design and 5 in any Science</b>	<b>4 in MYP Product Design and 5 in any Science</b>
<b>ENVIRONMENTAL SYSTEM &amp; SOCIETY</b>	<b>5 in MYP Geography or 5 in any MYP Science</b>	<b>4 in MYP Geography or a 4 in any MYP Science</b>
<b>SPORTS SCIENCE</b>	<b>5 in any MYP Science</b>	<b>4 in any MYP Science</b>
<b>MATHEMATICS AA</b>	<b>7 in MYP Standard Mathematics or 6 in MYP Extended Mathematics</b>	<b>4 in MYP Extended Mathematics or 5 in MYP Standard Mathematics</b>
<b>MATHEMATICS AI</b>	<b>7 in MYP Mathematics Standard or 6 in MYP Extended Mathematics</b>	<b>3 in any MYP Mathematics</b>
<b>VISUAL ART</b>	<b>5 in MYP Visual Arts</b>	<b>4 in MYP Visual Arts</b>
<b>FILM STUDIES</b>	<b>5 in MYP Media Studies or 5 in MYP English</b>	<b>4 in MYP Media Studies or 4 in MYP English</b>
<b>FRENCH/SPANISH/ARABIC B</b>	<b>6 in MYP Phase 4 in the language</b>	<b>5 in MYP Phase 4 in the language</b>

# LANGUAGE B

HI!

BONJOUR

HOLA!

## To support Language B choices

Year 7-11	Year 12 -13	Possible (Yes/No)
French (Ph 2 or Ph 4)	French Ab Initio	No
French (Ph 2 or Ph 4)	Spanish Ab Initio	Yes
Spanish (Ph 2 or Ph 4)	French Ab Initio	Yes
Spanish (Ph 2 or Ph 4)	Spanish Ab Initio	No
Arabic B Yr 11 (French Yr 7-9)	Spanish Ab Initio	Yes
Arabic B Yr 11 (Spanish Yr 7-9)	French Ab Initio	Yes
Arabic B Yr 11 (Spanish Yr 7-9)	Spanish Ab Initio	No
French (Phase 2)	French SL	No
French (Phase 4)	French SL	Yes with Grade 5 in MYP
French (Phase 4)	French HL	Yes with Grade 6 in MYP
Spanish (Phase 2)	Spanish SL	No
Spanish (Phase 4)	Spanish SL	Yes with Grade 5 in MYP
Spanish (Phase 4)	Spanish HL	Yes with Grade 6 in MYP

*Any questions, please contact us*

**DP Coordinator**

Dr. Mona Khreis

[monak@diadubai.com](mailto:monak@diadubai.com)

**CP Coordinator**

Dr. Kanchi Das

[kanchid@diadubai.com](mailto:kanchid@diadubai.com)

